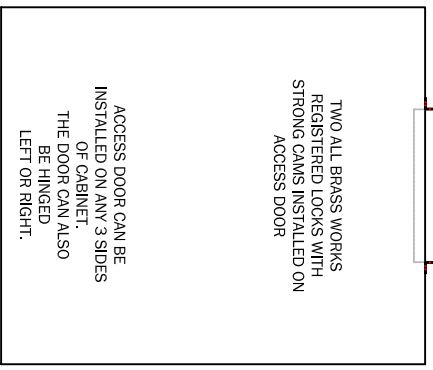
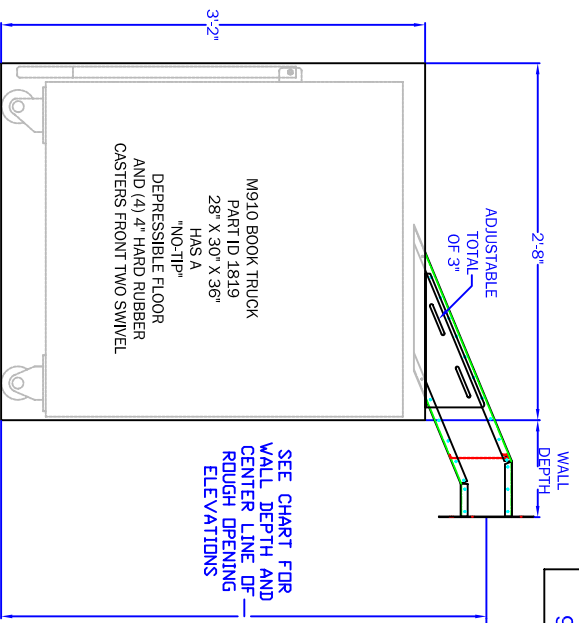


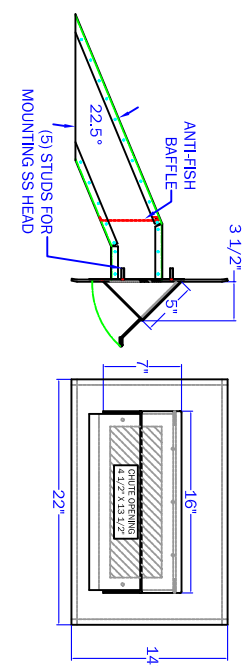
MODEL 910-TW INCLUDES

ACCESSORY OPTIONS

PART ID	DESCRIPTION	PART ID	DESCRIPTION
0133	SS HEAD, COATED STEEL TOP, CABINET, & DELIVERY CHUTE, LOCK AND KEYS, AND M910 BOOK TRUCK FEATURES GENTLE DROP NO-TIP FLOOR	0608	LOCKABLE LIFT PLATE INCLUDES LOCK BAR, PAD LOCK, AND 2 KEYS
		1819	EXTRA M910 BOOK TRUCK FEATURES GENTLE DROP NO-TIP FLOOR
		1114	COLOR COATED ARMOR ENTIRE STAINLESS STEEL HEAD ONE COLOR



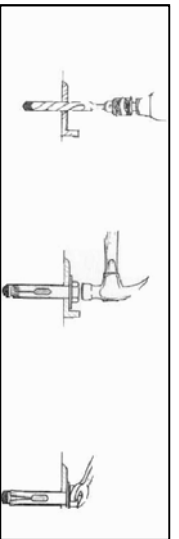
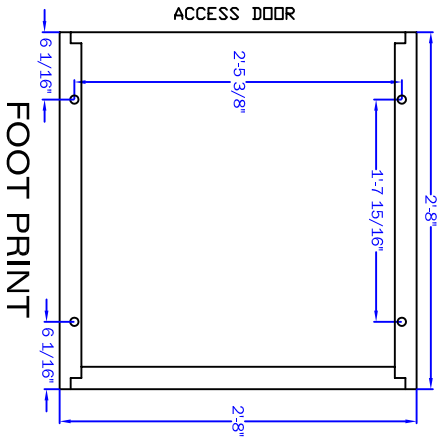
FRONT VIEW



WALL DEPTH ELEVATIONS

ASSUMES SAME INTERIOR AND EXTERIOR GRADE

WALL DEPTH	C.L. OF ROUGH OPENING
4" - 6"	41 1/2" - 42 1/4"
6" - 8"	42 1/4" - 43"
8" - 10"	43" - 44"
10" - 12"	44" - 44 3/4"
12" - 14"	44 3/4" - 45 1/2"
14" - 16"	45 1/2" - 46 1/2"
16" - 18"	46 1/2" - 47 1/4"
18" - 20"	47 1/4" - 48"



1. MARK AND DRILL HOLE SAME SIZE AS ANCHOR
2. TAP IN ANCHOR
3. SECURE WITH WRENCH

M910-TW ANCHORS WITH (4) 1/2" SS ANCHORS

THE INFORMATION CONTAINED IN THIS DRAWING IS THE SOLE PROPERTY OF AMERICAN BOOK RETURNS. ANY MISUSE IN PART OR AS A WHOLE IS STRICTLY PROHIBITED BY AMERICAN BOOK RETURNS.

AMERICAN BOOK RETURNS
120 6TH AVE. NORTH
ST. CLOUD, MN 56303
320-253-3044

REV 1	MATERIAL CHANGE	DATE 11-08-10	BY JRS	TITLE: UNLESS OTHERWISE SPECIFIED
DESCRIPTION	RELEASE	04-23-09	JRS	ANGLES: ±1° XXX±.030 XXX±.010

SHEET 1 OF 1	PART ID # 0133	SCALE NTS	REV 1
PART NAME MODEL 910-TW			
TITLE M910 THRU-WALL_CUT SHEET			