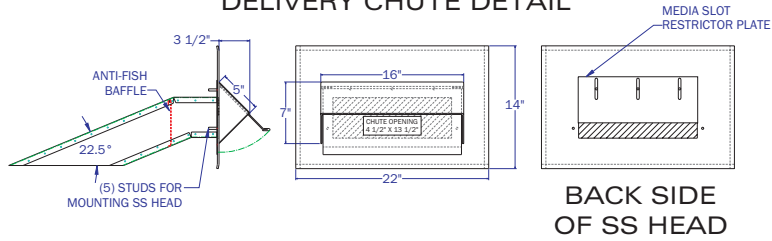


**SS HEAD & DELIVERY CHUTE DETAIL**

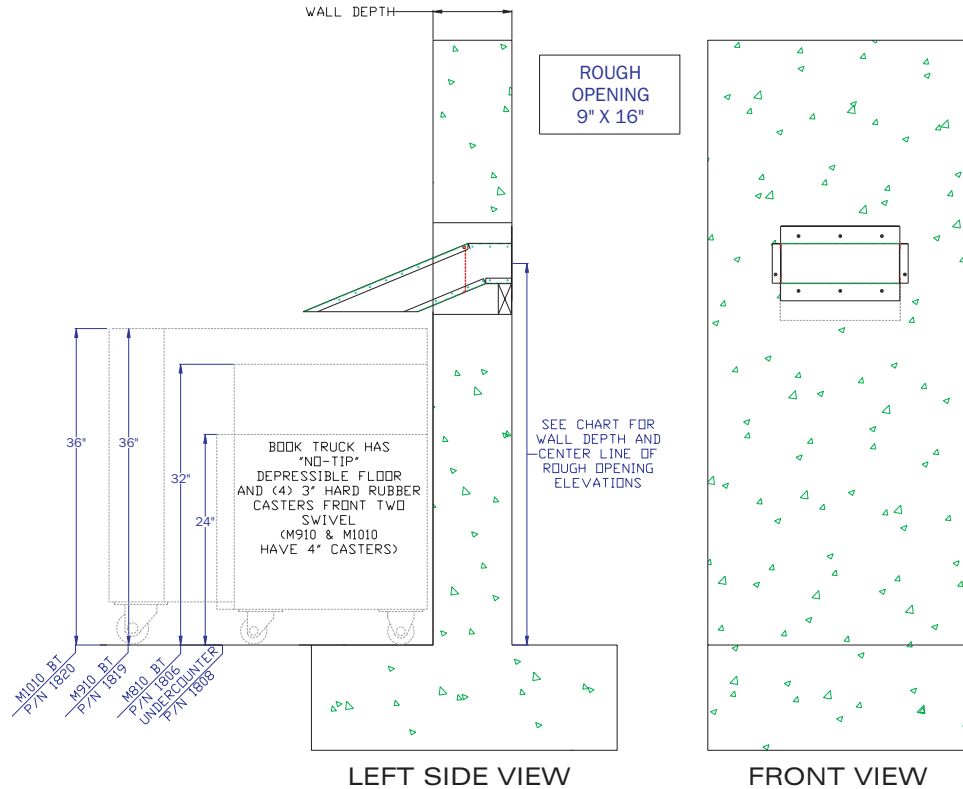


**MODEL HCU FOR MEDIA INCLUDES**

PART ID	DESCRIPTION
0138	STAINLESS STEEL HEAD WITH & STEEL DELIVERY CHUTE MEDIA SLOT RESTRICTOR PLATE ADJUSTABLE FROM 1/2" TO 2 3/4" X 13 1/2" WIDE. PLATE ATTACHES BEHIND SS HEAD SIGNS: "MEDIA DROP" & "LIFT TO OPEN" CUSTOM SIGNS AVAILABLE

**ACCESSORY OPTIONS**

PART ID	DESCRIPTION
0608	LOCKABLE LIFT PLATE
1806	M810 BOOK TRUCK FEATURES GENTLE DROP NO-TIP FLOOR
1808	UNDERCOUNTER BOOK TRUCK FEATURES GENTLE DROP NO-TIP FLOOR
1819	M910 BOOK TRUCK FEATURES GENTLE DROP NO-TIP FLOOR
1820	M1010 BOOK TRUCK FEATURES GENTLE DROP NO-TIP FLOOR
1114	COLOR COATED ARMOR ENTIRE STAINLESS STEEL HEAD AND CHUTE ONE COLOR



**WALL DEPTH ELEVATIONS**

ASSUMES SAME INTERIOR AND EXTERIOR GRADE  
CENTER OF ROUGH OPENING SHOWS MINIMUM HEIGHT FOR CLEARANCE OF BOOK TRUCKS

WALL DEPTH	C.L OF ROUGH OPENING	OPTIONAL BOOK TRUCKS
4" - 6"	41 1/2" - 42 1/4"	1806 - 1820
6" - 8"	42 1/4" - 43"	1806 - 1820
8" - 10"	43" - 44"	1806 - 1820
10" - 12"	44" - 44 3/4"	1806 - 1820
12" - 14"	44 3/4" - 45 1/2"	1806 - 1820
14" - 16"	45 1/2" - 46 1/2"	1806 - 1820
16" - 18"	46 1/2" - 47 1/4"	1806 - 1820
18" - 20"	47 1/4" - 48"	1806 - 1820

THE INFORMATION CONTAINED IN THIS DRAWING IS THE SOLE PROPERTY OF AMERICAN BOOK RETURNS. ANY MISUSE IN PART OR AS A WHOLE IS STRICTLY PROHIBITED BY AMERICAN BOOK RETURNS.

AMERICAN BOOK RETURNS  
120 6TH AVE. NORTH  
ST. CLOUD, MN 56303  
320-253-3044

TITLE  
**MODEL HCU FOR MEDIA\_CUT SHEET**

PART NAME  
**MODEL HCU FOR MEDIA THRU-WALL HEAD & CHUTE UNIT**

REV	DESCRIPTION	DATE	BY
	RELEASE	04-23-09	JRS

TOL: UNLESS OTHERWISE SPECIFIED  
ANGLES: ±1°  
.XX±.030  
.XXX±.010

SHEET	PART ID #	SCALE	REV
1 OF 1	SEE ABOVE	NTS	