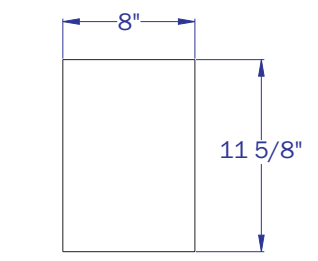


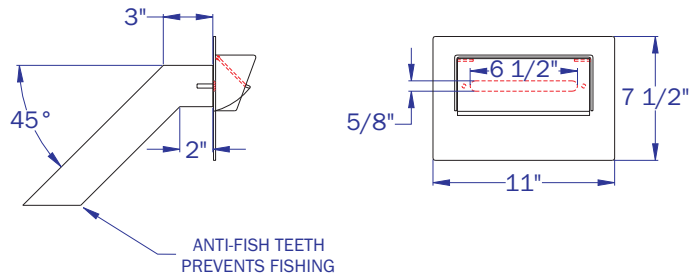
LEFT SIDE VIEW

BACK VIEW (SIDE 1)



FOOT PRINT

SS HEAD & OPTIONAL STEEL DELIVERY CHUTE



MODEL 300-TD INCLUDES	
PART ID	DESCRIPTION
0111	<p>STAINLESS STEEL EXTERIOR HEAD IS 7.5" X 11" WIDE HEAVY GAUGE STAINLESS STEEL. PROTECTIVE RAINSHIELD AND HINGED LIFTPLATE COVERS A 5/8" X 6-1/2" WIDE SLOT OPENING.</p> <p>SIGNS: "ENVELOPE DEPOSITORY" OR "PAYMENT DROP" & "LIFT TO DEPOSIT"</p> <p>MODEL 300-TD THRU DOOR SECURITY CABINET IS 12 X 8 X 16 INCHES HIGH AND MADE OF HEAVY GAUGE, BRUSHED STAINLESS STEEL. INDUSTRIAL HINGED DOOR CLOSES WITH AN EIGHT TUMBLER, ALL BRASS WORKS, REGISTERED LOCK AND DOUBLE-PLATED, HARDENED STEEL CAM. THIS MODEL RELIES ON A SOLID CORE PANEL, DOOR OR GLASS PASS THROUGH.</p>

ACCESSORY OPTIONS	
PART ID	DESCRIPTION
0601	DOUBLE LOCK DOOR PANEL WITH (2) EIGHT TUMBLER, ALL BRASS WORKS LOCKS AND (2) DOUBLE-BITTED KEYS FOR EACH LOCK.
0608	LOCKABLE LIFT PLATE INCLUDES LOCK BAR, PAD LOCK, AND 2 KEYS
0711	WIDE-SLOT SS HEAD 2" X 6.5" SLOT OPENING (REPLACES 5/8" OPENING)
0801	ENVELOPE HOLDER 8" X 4.5" INCHES WIDE [25 CAPACITY]
0802	ENVELOPE HOLDER 10.5" X 4.5" INCHES WIDE [25 CAPACITY]
0803	EXTRA ENVELOPE HOLDER 10.5" X 4.5" INCHES WIDE [100 CAPACITY]
0805	ENVELOPE HOLDER W/ WRITING SHELF 11" X 9.75" X 6" BLACK SIGN ON LIFT PLATE READS "ENVELOPES" [50 CAPACITY]
1216	STEEL CHUTE ATTACHED TO M300 CABINET FOR DOORS OR WALLS THICKER THAN 3 INCHES. YOUR WALL DEPTH MEASUREMENT IS NEEDED AT THE TIME OF YOUR ORDER.
1703	STAINLESS STEEL BACKER PLATE FOR MOUNTING TD FACE PLATE THROUGH GLASS.

WALL DEPTH EVELATIONS	
ASSUMES SAME INTERIOR AND EXTERIOR GRADE	
WALL DEPTH	C.L OF ROUGH OPENING
0-3"	12 5/8"
4"	15 5/8"
6"	17 5/8"
8"	19 5/8"
10"	21 5/8"
12"	23 5/8"
14"	25 5/8"
16"	27 5/8"
18"	29 5/8"
20"	31 5/8"

THE INFORMATION CONTAINED IN THIS DRAWING IS THE SOLE PROPERTY OF AMERICAN SECURITY CABINETS. ANY MISUSE IN PART OR AS A WHOLE IS STRICTLY PROHIBITED BY AMERICAN SECURITY CABINETS.

AMERICAN SECURITY CABINETS
120 6TH AVE. NORTH
ST. CLOUD, MN 56303
320-253-3044

TITLE
M300-TD_CUT SHEET

PART NAME
M300-TD-THRU DOOR

REV	DESCRIPTION	DATE	BY	TOL: UNLESS OTHERWISE SPECIFIED ANGLES: ±1° .XX±.030 .XXX±.010
	RELEASE	09-01-10	JRS	

SHEET	PART ID #	SCALE	REV
	0111	NTS	